

# GOSPEL CENTER RESCUE MISSION

*restoring lives since 1940*

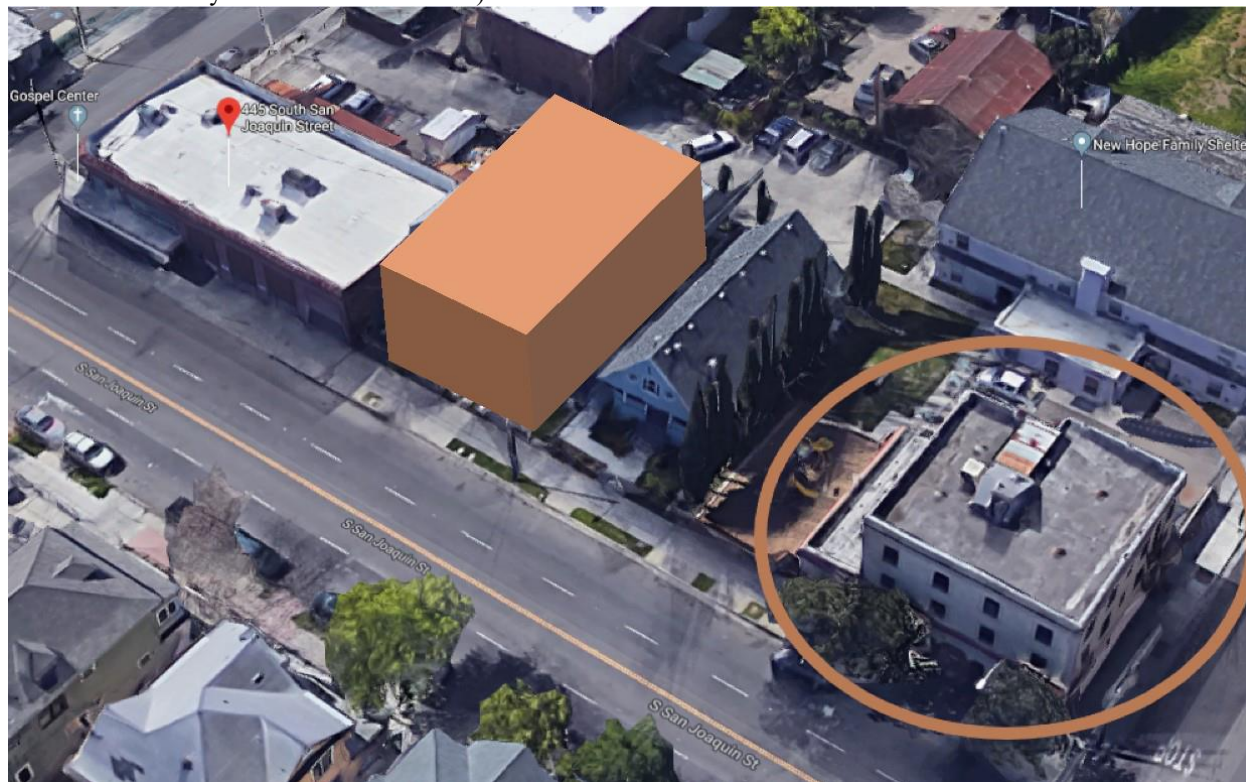
New Life Program, Emergency Lodging, SSA/SSI Representative Payee Services, Homeless Thrift Store,  
Recuperative Care, Community Feeding, Disaster Refugee Relief, Non-profit Training

## NEED STATEMENT: NEW LIFE MEN'S HOME

**DESCRIPTION:** Demolition of two old side-by-side Victorian structures on campus and their replacement with a three story 178 bed capacity men's New Life Program (NLP) dorm. Building will be ADA compliant, have an elevator, laundry facilities on each floor, two large classrooms, counseling offices, computer lab, gym and a dayroom. Additional support facilities located on campus or nearby.

**BENEFIT:** The creation of one of the largest Homeless men's faith based regeneration programs in Northern California. When combined with the women's New Life Program expansion, 400 beds will be dedicated to long term Homeless regeneration for men, women and women with children. NLP includes: addiction recovery, moral ethical development, life skills training, education towards a GED, community service, job training and acquisition, transitional housing leading to permanent housing, and a dog foster program.

**COST:** \$7M at \$300/square foot. Gifts of any amount will help. (Note \$1M pledged for demolition and hazardous material removal by RB Environmental Inc.)



New Life Men's Home aerial view shown as superimposed structure.

Circled structure is the current New Life Women's Home (former Alustiza Hotel) renovation in progress

**CONTACT:** Wayne Richardson, CEO at [wrichardson@gcrms.org](mailto:wrichardson@gcrms.org)

**GCRM EIN#:** 94-1375835

